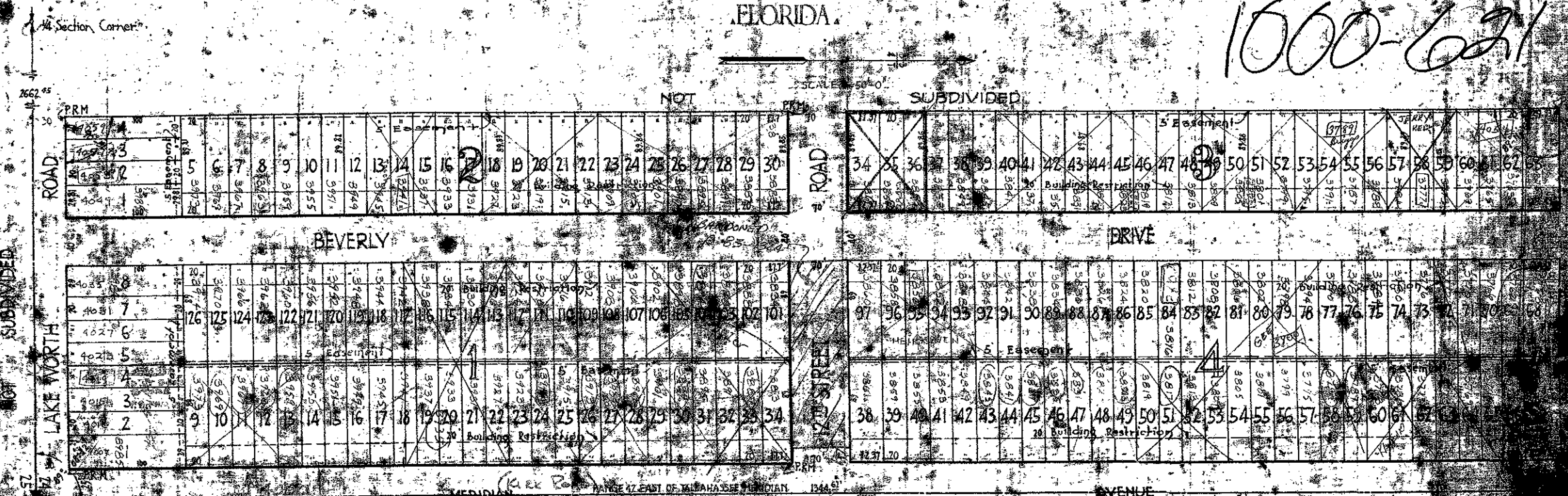


15-11

# BEVERLY PARK

A SUBDIVISION IN SECTION 24 TWP 44S RG 42E  
PALM BEACH COUNTY  
FLORIDA

1000-621



**KNOW ALL MEN BY THESE PRESENTS:**  
 That G. L. MOLCHAN, joined by his wife NORMA B. MOLCHAN, owners in fee simple of the tract of land shown on this plat and described as follows: E1/2 of E1/2 of SE1/4 of Section 24, Township 44S, Range 42E, Palmetto Survey, and all other lands shown hereon, have caused to be surveyed, laid out and plotted, and to hereby dedicate to the public use for public highways, streets and alleys shown hereon, and to themselves, their heirs and assigns, the public use thereof, whenever the same may be abandoned by the public, and discontinued by law.  
 IN WITNESS WHEREOF, we have hereunto set our hands and seals this 15th day of July, A.D. 1926.  
 Signed in the presence of Le Roy S. Palen  
Frank S. Brumell

**ACKNOWLEDGMENT**  
 STATE OF FLORIDA  
 COUNTY OF PALM BEACH  
 I, the undersigned, a Notary Public in and for the State of Florida, do hereby certify that on this day personally appeared G. L. MOLCHAN, and NORMA B. MOLCHAN, his wife, both of legal age and of sound mind, who are known to me to be the individuals described and who executed the foregoing dedication, and who acknowledged before me that they executed the same voluntarily for the purpose therein expressed.  
 I further certify that the said NORMA B. MOLCHAN is the wife of the said G. L. MOLCHAN, and that she is a party to said dedication for the purpose of releasing all her right, title and interest, whether of dower, homestead or otherwise, in and to the lands described therein, and that she has signed a declaration in writing, separate and apart from her said husband, acknowledging the same, and that she has signed a declaration in writing, separate and apart from her said husband, acknowledging the same, and that she has signed a declaration in writing, separate and apart from her said husband, acknowledging the same.  
 Witness my hand and seal of the State of Florida, this 15th day of July, A.D. 1926.  
Notary Public  
 Commissioner of Deeds

APPROVED BY BOARD OF CITY COMMISSIONERS  
 CITY OF LAKE WORTH, FLA.  
Commissioner  
 APPROVED BY BOARD OF COUNTY COMMISSIONERS  
 PALM BEACH COUNTY, FLA.  
County Engineer

**ENGINEERS' CERTIFICATE**  
 I, the undersigned, a Licensed Professional Engineer in the State of Florida, do hereby certify that the plat shown hereon is a true and correct representation of the actual location and dimensions of the lots shown thereon, and that the same have been surveyed and laid out in accordance with the laws of the State of Florida, and that the same are true and accurate in all particulars.  
Engineer  
 BEVERLY PARK  
 Florida State Certificate

15/11  
 15  
 11